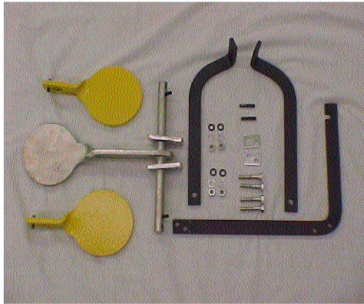


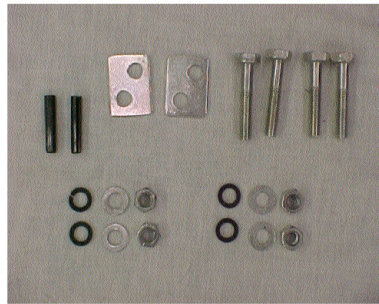
# Do-All Traps 9mm-.30-.06 Auto Reset

The Do-All Traps 9mm-.30-.06 Auto Reset specifically engineered for soft nosed 9mm-.30-.06 caliber pistol and rifle shooters has a hands free resetting system. As the bullet strikes each target, the force spins the target and locks it in an upright position. To reset the system, simply shoot the reset target or each individual target and begin another round of practice or competition.

## PARTS INCLUDED



## HARDWARE



## BENT FOOT LEFT AND RIGHT



Item	Description	Qty
1	Ground Spike	3
2	Bent Foot	2
3	Main Upright	1
4	Pre-Assembled Target	1
5	Square spacer	2
6	Lock Washer 5/16"	4
7	Washer 5/16"	4
8	Bolt 5/16" x 1 3/4"	4
9	Nut 5/16"	4
10	Large Target Sticker	5

## TOOLS NECESSARY

Two 3/8" wrenches

## ASSEMBLY INSTRUCTIONS

### Step 1

Take Item 3 (Main Upright) and stand in upright position. Take Item 2 (bent foot right & bent foot left) placing them in a horseshoe position with the Main Upright dividing the two creating a Y shaped base. Using two of Item 8 (Bolt 5/16" x 1 3/4") and two of Items 6, 7, & 9 (lock washer, washer, nut) fasten Items 2 & 3 as shown in Diagrams A & B.

### Step 2

Take Item 4 (Pre-Assembled Target Bar) place it at the top of the Main Upright facing the single forward leg. Align the pre-drilled brackets with the holes at the top of the Main Upright. Take two of Item 8 (bolts) and simultaneously connect the brackets to the Main Upright.  
Note: While connecting the brackets to Main Upright you will need to take Item 5 (Square

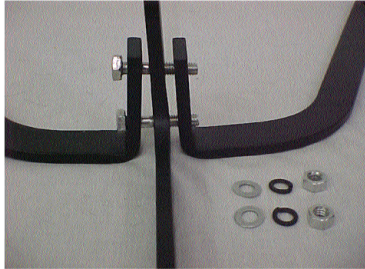
Spacers) and slide it in between the brackets and the Main Upright one on each side. Using two of Items 6, 7, & 9 (lock washer, washer, nut) fasten Items 3 & 4 as shown in Diagram C & D.

### Step 3

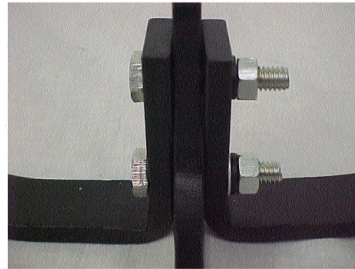
There are 5 Small Target Stickers supplied, which you can put on both sides of the red targets and one on the front trip target.

**MAKE SURE THE TOP SILVER TARGET IS IN THE UPRIGHT POSITION & PUSHED BACK AS FAR AS IT WILL GO WHEN FASTENING THE TWO SILVER BRACKETS**

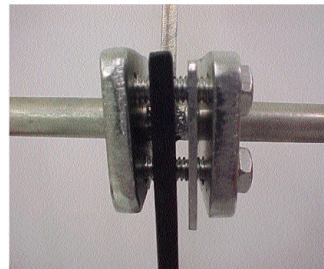
**DIAGRAM A**



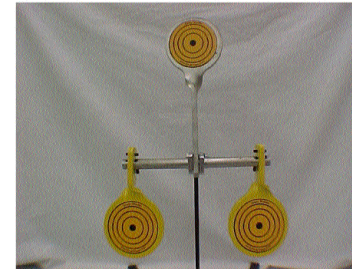
**DIAGRAM B**



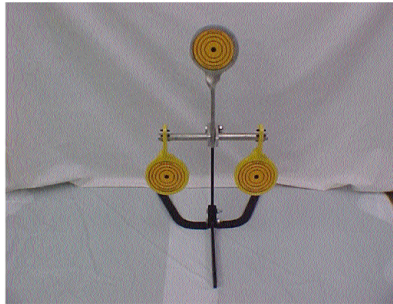
**DIAGRAM C**



**DIAGRAM D**



**THIS IS WHAT YOUR 9MM-30.06 AUTO RESET SHOULD LOOK LIKE COMPLETE**



**NO WALKING OR SETUP,  
JUST RELOAD AND HAVE FUN.**

**ALWAYS WEAR PROPER EYE AND EAR PROTECTION**

**ALWAYS SHOOT WITH MINIMUM DISTANCE OF 30 YARDS**

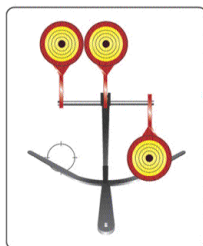
**ALWAYS SECURE AND MAINTAIN A SAFE BACKDROP TO PREVENT  
INJURY FROM ANY MISDIRECTED OR RICOCHED BULLETS**

**ALWAYS USE SOFT NOSE BULLETS, IF OTHERS ARE USED BODILY  
INJURY MAY OCCUR**

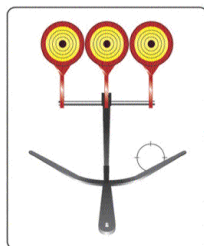
**ALWAYS OBSERVE ALL GUN SAFETY AND RANGE RULES**

**NEVER USE WITH ARMOR PIERCING, FULL METAL JACKETED,  
OR SHOT GUN SLUG AMMUNITION**

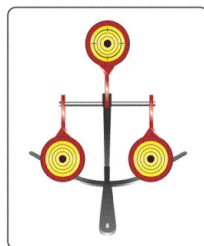
**SHOT 1**



**SHOT 2**



**SHOT 3**



**Do-All Traps, LLC does not accept any responsibility for damages and/or injury sustained from the use or misuse of this product.**