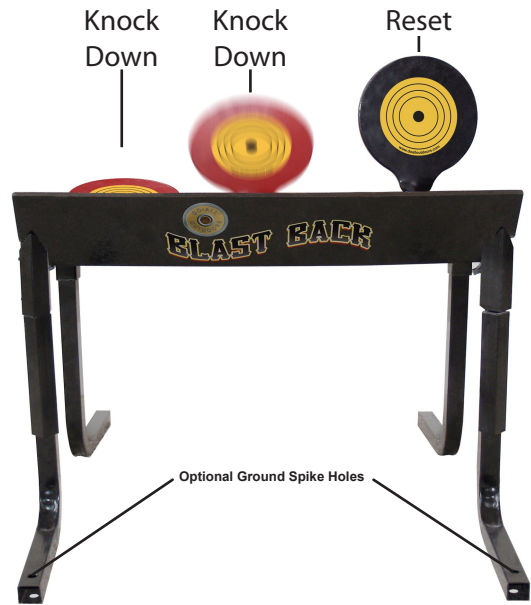
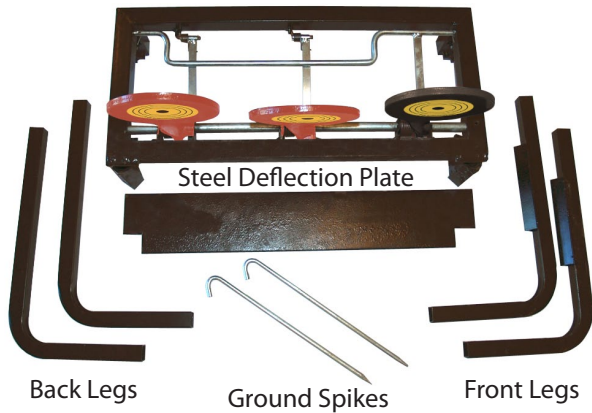
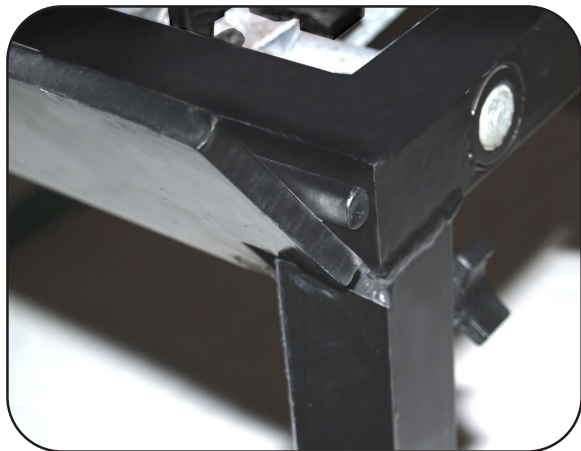


# BLAST BACK

AUTOMATIC POP-UP TARGET  
9MM-30.06



- 1) Insert legs into receivers in target body.
- 2) Secure legs by screwing in holding bolts into the back of the leg receivers.



- 3) Slide deflection plate into slotted holding area at the top of the front leg receivers.
- 4) Set up in front of a safe backdrop, perpendicular to where the shooter will be. Insert ground spikes through holes in front legs for extra stability.
- 5) Read all safety instructions before using.

**READ ALL SAFETY INSTRUCTIONS THOROUGHLY. FAILURE TO FOLLOW ALL SAFETY INSTRUCTIONS COULD RESULT IN INJURY OR DEATH.**

**Rated for 9mm - 30.06**

**Minimum distance: 30 yards with pistol / 100 yards with rifle.**

**Shooters and Bystanders should:**

- Always wear proper eye and ear protection.
- Always shoot with a minimum distance of 30 yards with pistol / 100 yards with rifle.
- Secure and maintain a safe backdrop to prevent injury from any misdirected or ricochet bullets.
- Always use softnose bullets, if others are used bodily injury may occur.
- Always observe all gun safety range rules.
- Never use with hollow point, armor piercing, full metal jacketed, or shotgun slug ammunition.
- Always shoot a target set perpendicular to the shooter, not at an angle.
- Always follow Federal, State and local guide lines regarding firearm ammunition use.
- Follow all gun safety range rules.

**Adult supervision is required. Always keep targets, firearms and ammunition from reach of children.**

Do-All Outdoors, LLC. (©2009) does not accept any responsibility for damages and/or injury sustained from the use or misuse of this product.

**CUSTOMER SERVICE: 1-866-SHOT-DOC**

Do-All Outdoors, LLC.  
216 19th Avenue, North • Nashville, TN 37203  
[www.doalloutdoors.com](http://www.doalloutdoors.com)

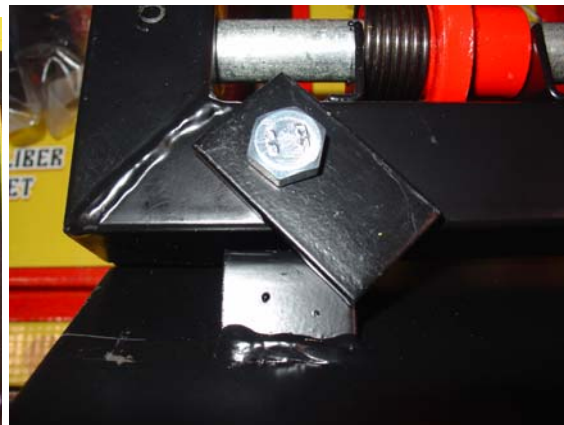
## BLAST BACK DEFLECTION PLATE INSTRUCTIONS



Start by finding the front of the Blast Back. The front has the legs angled outwards for deflection purposes. See above for left and right sides. At the top of the leg, there is a lip that goes upward, this is where the deflection plate will rest.



See above for how the deflection plate rests on top of legs. The deflection plate will rest in this position even without the brackets installed.



Find the brackets and bolts shown on the left picture. Find the notch on the back of the deflection plate, shown in the middle picture. Right behind the notch, there is a hole for the bolt to go into. Place the bracket down over the notch like shown in the right picture and tighten down the bolt/nut. The deflection plate is now in place and wont move.