

# Aerial Assault Black 3.0 Auto Trap

## WARNING

### SAFETY, STORAGE & USE

IF THE MAIN SPRING IS ATTACHED AND THE TRAP ARM IS IN THE 6 O'CLOCK POSITION, THE TRAP IS ARMED AND EXTREME CAUTION IS REQUIRED.

TO DISARM, TURN THE SWITCH UP TO DISARM ON THE TRAP AND DEPRESS THE FOOT PEDAL RELEASE. THIS ROTATES THE ARM CLOCKWISE UNTIL IT REACHES THE 12 O'CLOCK POSITION.

WHEN DISARMED, REMOVE THE MAIN SPRING BEFORE MAKING ANY ADJUSTMENTS IN REGARDS TO TRAP POSITION OR WHEN STORING THE TRAP AFTER USE.

WHEN STORING THE UNIT, TURN THE SWITCH TO THE OFF POSITION AND MAKE SURE THAT THE SPRING IS REMOVED.

DO-ALL TRAPS, LLC DBA DO-ALL OUTDOORS, LLC DOES NOT ACCEPT ANY RESPONSIBILITY FOR DAMAGES AND/OR INJURY SUSTAINED FROM THE USE OR MISUSE OF THIS PRODUCT.



## AERIAL ASSAULT BLACK 3.0 AUTO TRAP

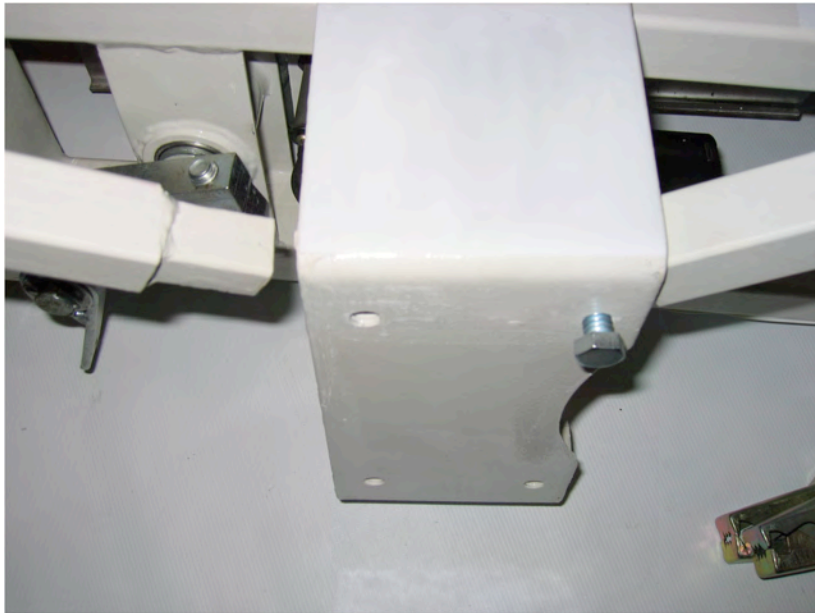
### Parts Included:

- 4-Legs
- 4-Short Stacker Poles
- 4-Long Stacker Poles with Hex Screws
- 2-Horseshoes
- 1-Black Main Spring
- 1-Spade Bolt with 2 M10 lock nuts
- 1-Foot Pedal
- 1-Main Unit
- 1-Safety Ring
- 1-Large Wrench
- 1-Small Wrench
- 1-Safety Pin with small chain

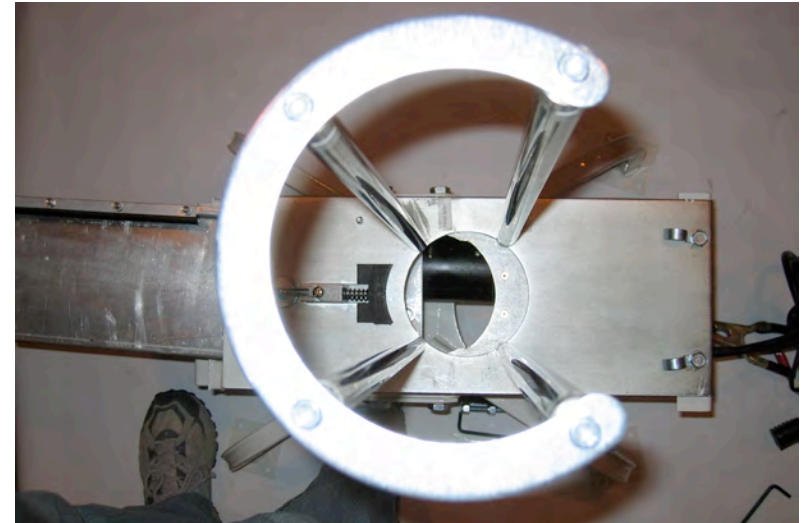


Find Instructions, Video, FAQs & Keep up with  
all of our new & exciting products by visiting: [www.doalldoors.com](http://www.doalldoors.com)

Insert Legs into each leg bracket and tighten with bolt.



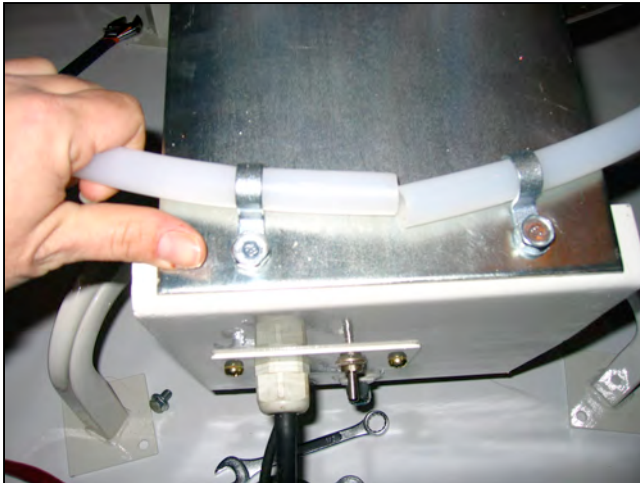
Attach each short pole ensuring that the smaller poles are in the front of the trap and larger poles are in the rear. Line up horseshoe with top of the poles screw in long poles through horseshoe into short poles. Now attach horseshoe to top of poles and tighten hex screws.



Safety Ring Guard shows the projection of the throwing arm when in use to ensure safety.

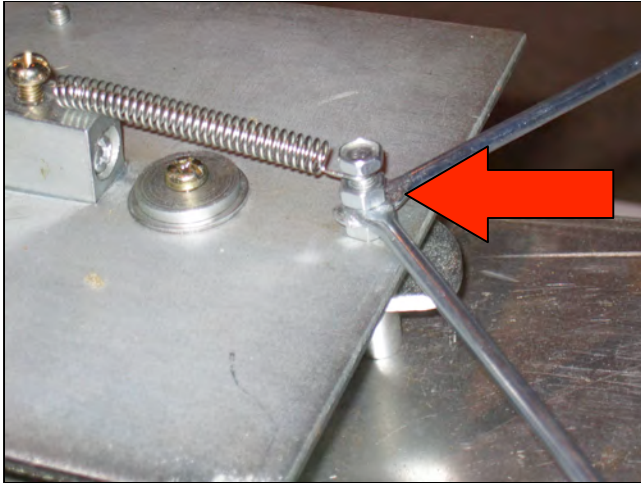
TO ASSEMBLE:

LOOSEN CLAMP BOLTS ON REAR OF TRAP AND SLIDE EACH END OF THE PLASTIC GUARD AS SHOWN TO BELOW AND TO THE LEFT. REMOVE ONE OF THESE BOLTS TO INSERT THE END OF SAFETY PIN CHAIN UNDER BOLT TO SECURE YOUR SAFETY PIN TO THE TRAP.

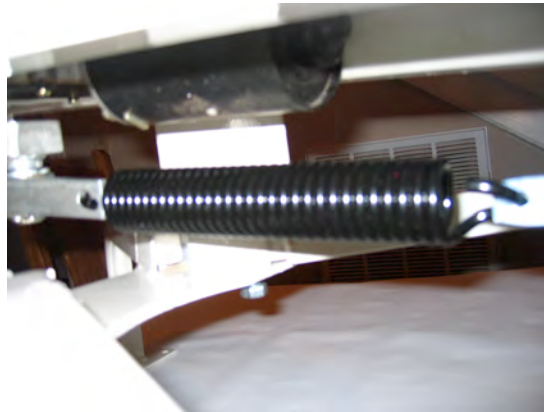
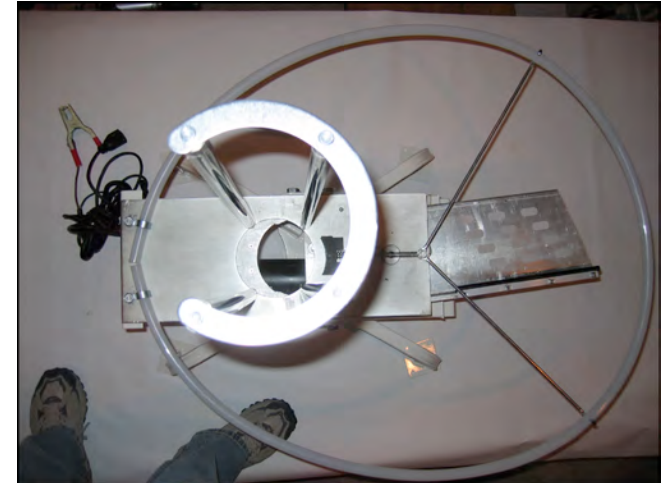


**This pin is important  
for your safety!**  
See last page.

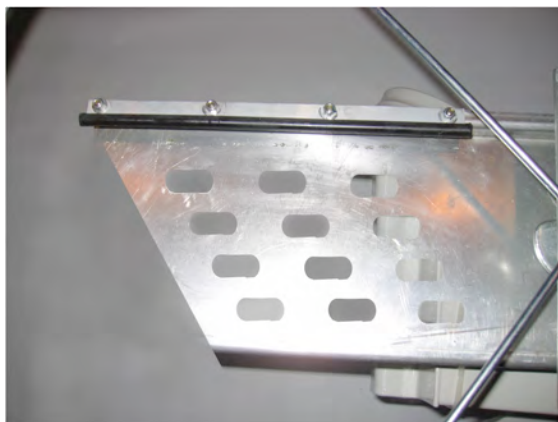
This pin is designed to catch the arm, the trap should be disarmed and the spring disconnected if transporting, working on, adjusting or storing.



REMOVE PLUNGER SPRING AND PLUNGER BOLT AT END OF FEEDER TRAY. INSERT SCREW THROUGH HOLE AT END OF SAFETY RING HOLDING RODS BETWEEN THE TWO NUTS ON BOLT, SECURE AND ADJUST RODS.



Rotate arm counter clockwise to 12:00. Insert Black Main Spring into silver swiveling spring hook. Attach Spade Bolt to spring & feed thru opening at back of trap. Tighten to show 1 or 2 threads on the back side of the lock nut. Now tighten the inner lock nut closer to the frame.



Because the clay lands directly onto the throwing arm, the Aerial Assault needs little adjustment. Loosen the two bolts on either side of the trap to adjust your throwing angle. Once desired angle is reached, tighten bolts back.





### Low Voltage Light:

The LED Low Voltage indication light on the switch panel will light up when the battery voltage drops too low. This will indicate that your battery needs to be re-charged.

### Switch Operation:

Off Position stops arm in current position/ On will cycle arm counter clockwise stopping at loaded 6 o'clock position/ Disarm will take arm clockwise all the way out to the 12 o'clock unloaded position leaving no tension on the spring. When adjusting, reloading, or transporting or storing make sure the trap is disarmed, placed in the 12 o'clock uncocked position, and the main spring removed.

### SAFETY

Shooter should always stand to the side of the thrower, with a distance of no less than ten yards (30 feet) between the shooter and the thrower. Thrown targets can cause injuries. Be sure to first practice using thrower in an open area away from people, trees or animals (recommend at least 400 meter open field / shot fall zone).

- ❖ READ ALL INSTRUCTIONS BEFORE USING THROWER.
- ❖ ALWAYS WEAR PROPER EYE PROTECTION.
- ❖ NEVER THROW TOWARD SHOOTER OR BYSTANDER.
- ❖ NOT RECOMMENDED FOR CHILDREN UNDER 10.
- ❖ FOR USE ONLY UNDER CLOSE ADULT SUPERVISION.
- ❖ ALWAYS OBSERVE GUN RANGE SAFETY RULES.
- ❖ DO NOT ALTER THROWER.

### IMPORTANT:

For your safety, insert safety pin in top plate blocking throwing arm when trap is not in use.



Load clays, attach Foot Pedal cord to outlet & hook connectors to battery & you're ready to shoot!

\*\*\*LOADING, SERVICE, TRANSPORT & STORING\*\*\*

You must ensure that the trap is in an un-cocked position when not in use.

PLEASE DO NOT RETURN ITEM TO STORE. FOR QUESTIONS, CONCERNS OR WARRANTY INFORMATION, PLEASE CALL: 800-252-9247.

PLEASE ENSURE THAT ALL PARTIES INVOLVED WITH THE OPERATION OF THE AERIAL ASSAULT AUTO TRAP READ AND ADHERE TO ALL SAFETY WARNINGS.

**DO-ALL TRAPS, LLC DBA DO-ALL OUTDOORS, LLC DOES NOT ACCEPT ANY RESPONSIBILITY FOR DAMAGES AND/OR INJURY SUSTAINED FROM THE USE OR MISUSE OF THIS PRODUCT.**



**BERSA**

For target shooting or home defense, Do-All Outdoors, LLC.  
Recommends Bersa Guns. Visit our friends at [www.beresa.com](http://www.beresa.com)



Firearms | Holsters | Grips | Apparel | Accessories