

Find Instructions, Video, FAQs & Keep up with  
all of our new & exciting products by visiting:  
[www.doalldoors.com](http://www.doalldoors.com)



# BY34 Backyard Clayhawk

## Assembly Instructions

Hardware Included:

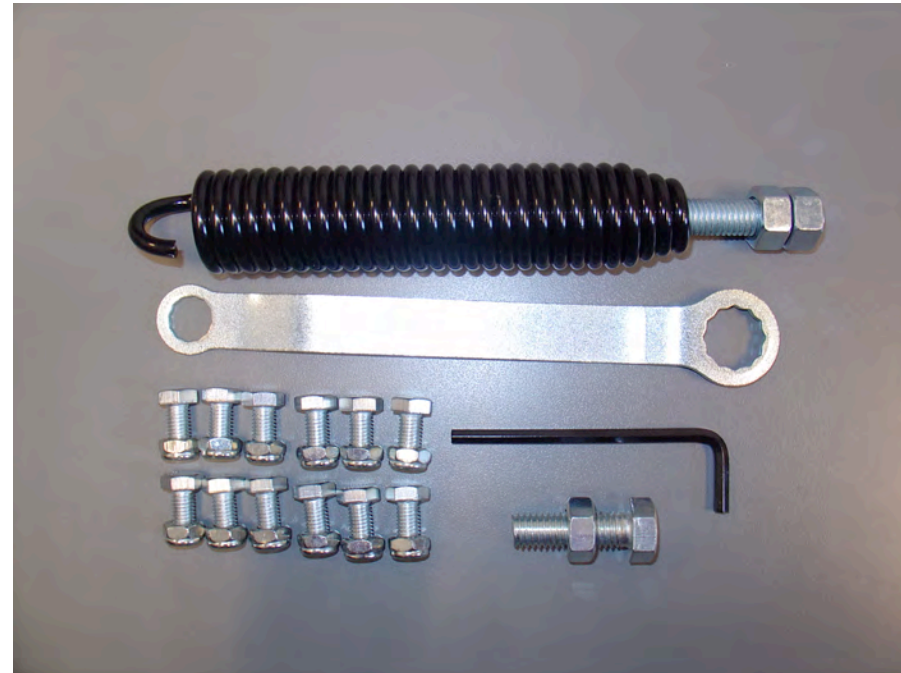
Long Bolt & Nut – 1

Short Bolts & Nut - 12

Main Spring with Spade bolt & Nut – 1

Allen Wrench – 1

Hex Wrench - 1



## Step One



**(DO NOT TIGHTEN HEX NUTS COMPLETELY UNTIL ALL HAVE BEEN STARTED)**

**The hex bolts are the same size as the holes, therefore it will be a tight fit to ensure a stable and firm base.**

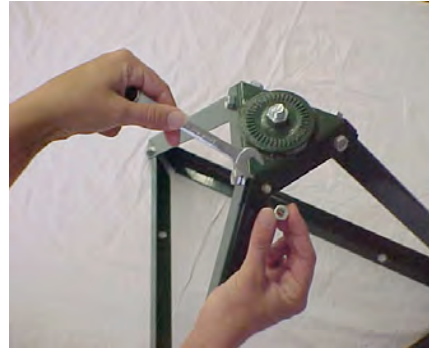
Take the Ground/Base Frame with holes and lay out in a triangular shape. Take one of the Side/Corner Upright Frames and overlap one corner of the Ground/Base triangle. Push the hex bolts (one of the 12 included) through the ground base and into the side corner upright from the inside out. Secure with one of the 12 provided hex nuts.



800.252.9247

# FRAME ASSEMBLY

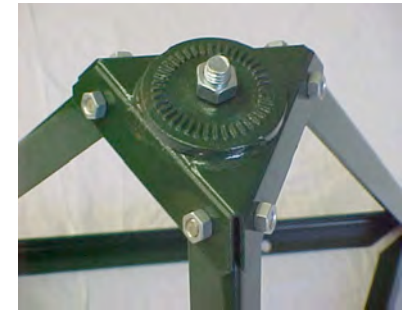
## Step Two



Once you have assembled the bottom and sides of the base assembly, cap with the Triangular/Top Pivot casting.

Now that the top is in place, secure with provided hex bolts and hex nuts from the inside out. Be sure to go back and tighten down all hex nuts on frame assembly.

## Step Three



Take the 1 3/4" hex bolt and push up through the center hole of the Triangular/Top Pivot casting securing with the 1/2" hex nut. This is where you will attach the 3 Pivot Mount and your Trap Head.

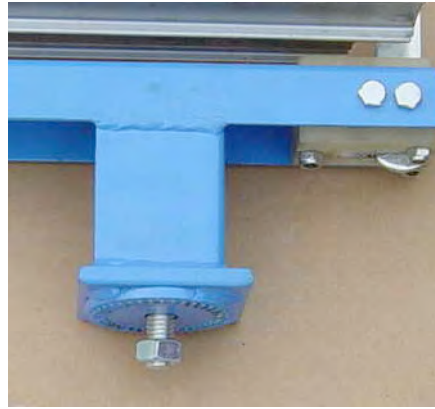
**When using your Clay Hawk in the field, make sure you anchor your frame securely by driving your Ground Mount Spikes into the earth at opposite angles.**

**If the ground is soft you should also use sand bags or mount directly to a sheet of plywood. Make sure you control the trap by holding onto the handle when in use.**

# THROWING ARM ASSEMBLY



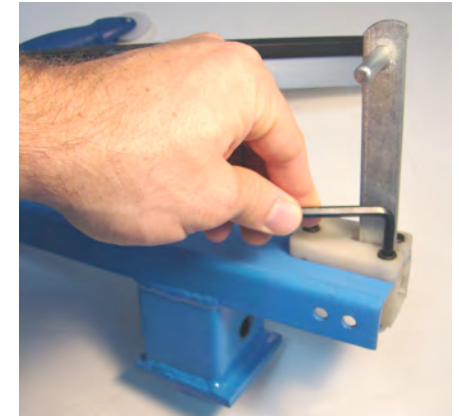
Attach pivot mount to unit frame – Attachment will be the same regardless of type (ie: Post Mount, Clayhawk, Single or Double).



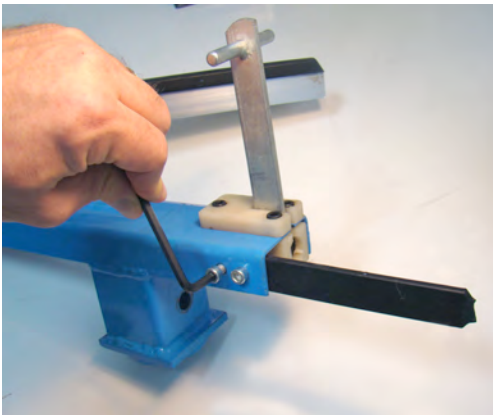
Insert 1 3/4" bolt into hexagon shaped opening, in the trap head carriage through the top of the pivot mount assembly; interlocking the gear mesh teeth. Secure with 1/2" nut using wrench.



Place the paddle-shaped counter balance on the arm, aligning all pre-drilled holes. By using the allen screws, attach the throwing arm and counter balance to steel mounting plate and secure tightly with provided allen wrench.



Attach Trigger by separating the 2 parts of the trigger block. Slide trigger facing up into slot in the back of the trap head with the small part of the block on top of the trap head and the large piece below. Tighten the bolts securely through the block using the nuts underneath.

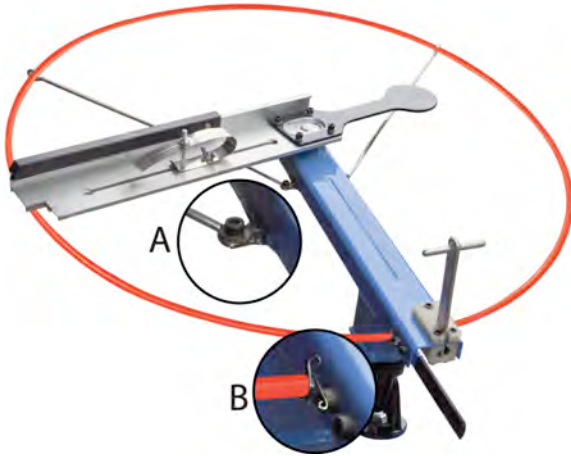


Attach handle to inside of trap head by screwing allen bolts through trap head into handle. Tighten securely.



Rotate the arm counter clockwise into the 1 o'clock position. Hook the black main spring into the silver swiveling spring hook, which is attached underneath the throwing arm/clutch pivot point.

At the narrow end of the black main spring, screw one of the provided 1/2" nuts onto the threaded 1/2" bolt about 1" deep. Pull the threaded 1/2" bolt through the hole at the back of the trap head carriage. Now screw on the other 1/2" nut with the provided wrench until the two nuts meet. \*\*It is NOT necessary to tighten the spring all the way for optimum speed and distance.



To attach safety ring guard, attach the ring brace arms using allen screws (A).

Pinch arms of the spring holders (B) and slide them over ends of ring guard. Push ends of ring guard over posts on trap head and slide spring holder down over guard and post to secure.

Secure with brace arms so ring guard will show the path of the throwing arm.

### SAFETY

Shooter should always stand to the side of the thrower, with a distance of no less than ten yards (30 feet) between the shooter and the thrower. Thrown targets can cause injuries. Be sure to first practice using thrower in an open area away from people, trees or animals (recommend at least 400 meter open field / shot fall zone).

- ❖ READ ALL INSTRUCTIONS BEFORE USING THROWER.
- ❖ ALWAYS WEAR PROPER EYE PROTECTION.
- ❖ NEVER THROW TOWARD SHOOTER OR BYSTANDER.
- ❖ NOT RECOMMENDED FOR CHILDREN UNDER 10.
- ❖ FOR USE ONLY UNDER CLOSE ADULT SUPERVISION.
- ❖ ALWAYS OBSERVE GUN RANGE SAFETY RULES.
- ❖ DO NOT ALTER THROWER.

For videos or more information, or to register your product, go to [www.doalldoors.com](http://www.doalldoors.com)

**Eagle**  
IMPORTS INC.

**BERSA**

For target shooting or home defense, Do-All Outdoors, LLC.  
Recommends Bersa Guns. Visit our friends at [www.bersa.com](http://www.bersa.com)



Firearms | Holsters | Grips | Apparel | Accessories