



BY56 Backyard _ Single Assembly Instructions

Hardware Included:

Long Bolts & Nuts – 4

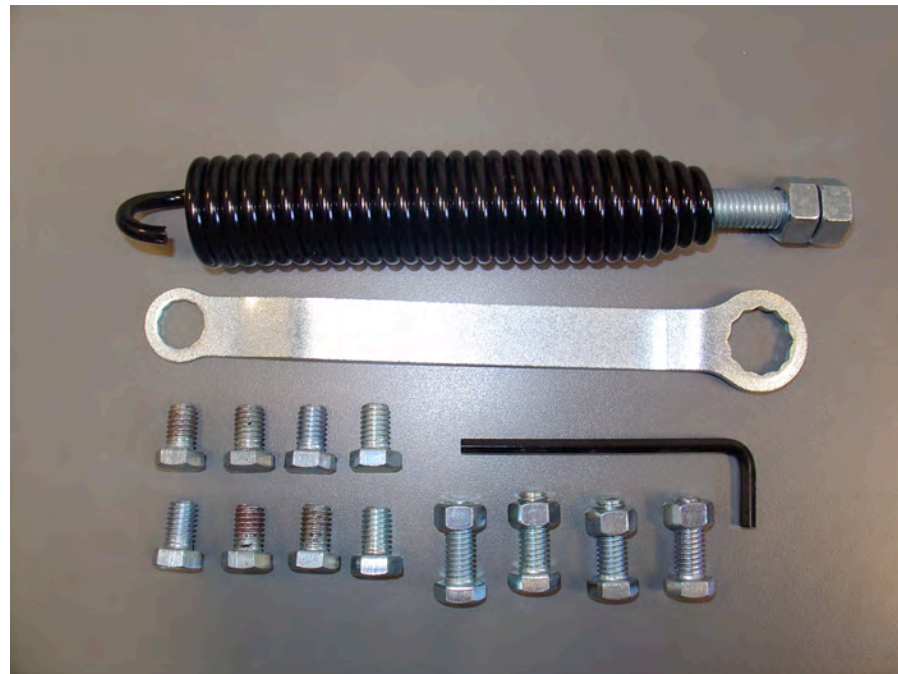
Short Bolts – 8

Self Tapping Screws - 4

Main Spring with Spade bolt & Nut – 1

Allen Wrench – 1

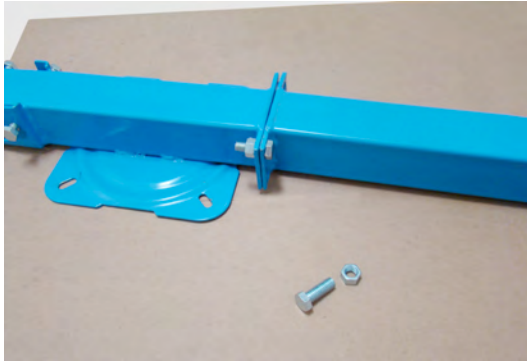
Hex Wrench – 1



**Find Instructions, Video, FAQs & Keep up with
all of our new & exciting products by visiting:
www.doalldoors.com**

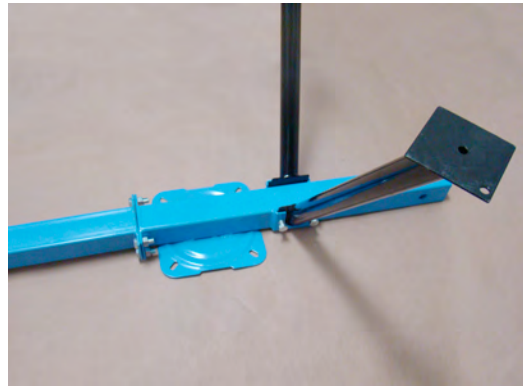
FRAME ASSEMBLY

Step One



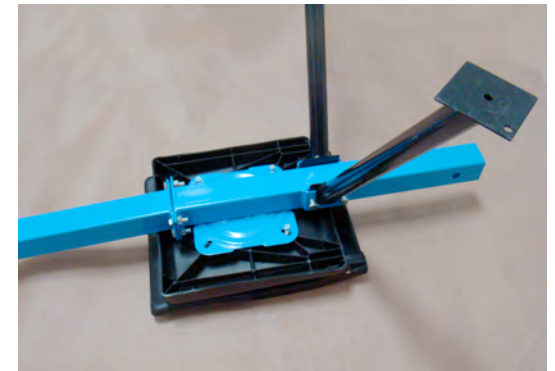
Take the tail beam and assemble securely to the flat mounting plate on the back of the seat assembly using four 3/8" nuts and 3/8" bolts.

Step Two



Take the four support legs and slot them into the four leg brackets as per pictures. *****Note that the predrilled holes at the end of each leg are the feet not the mounting brackets. These holes are provided if you want to mount your trap frame to a solid surface or platform.

Step Three



Take plastic seat and position onto the seat plate/seat assembly making sure the seat back folds toward the flat mounting plate for the tail beam assembly. Secure the seat to the seat plate by using the 4 self tapping screws.

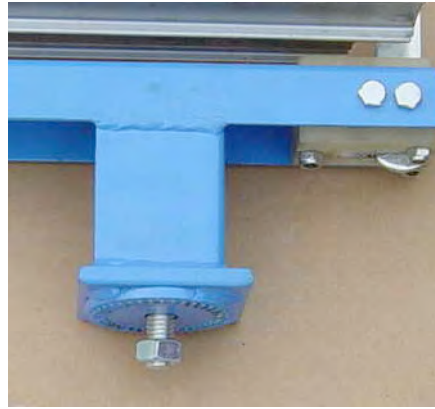


800.252.9247

THROWING ARM ASSEMBLY



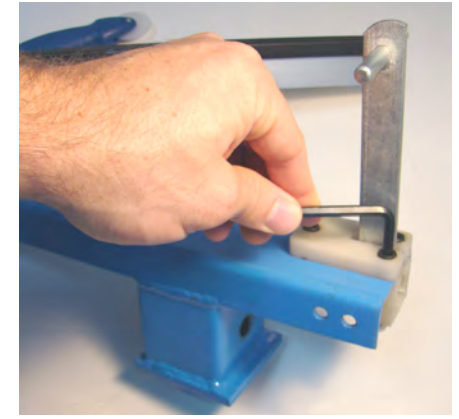
Attach pivot mount to unit frame – Attachment will be the same regardless of type (ie: Post Mount, Clayhawk, Single or Double).



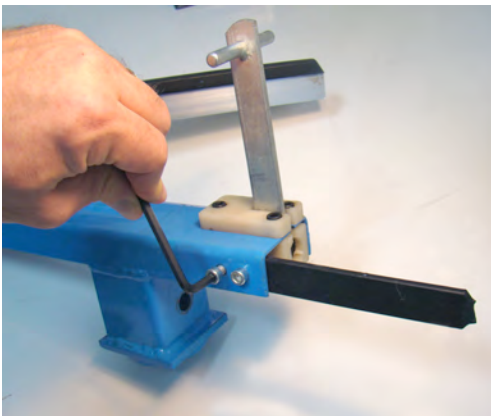
Insert 1 3/4" bolt into hexagon shaped opening, in the trap head carriage through the top of the pivot mount assembly; interlocking the gear mesh teeth. Secure with 1/2" nut using wrench.



Place the paddle-shaped counter balance on the arm, aligning all pre-drilled holes. By using the allen screws, attach the throwing arm and counter balance to steel mounting plate and secure tightly with provided allen wrench.



Attach Trigger by separating the 2 parts of the trigger block. Slide trigger facing up into slot in the back of the trap head with the small part of the block on top of the trap head and the large piece below. Tighten the bolts securely through the block using the nuts underneath.

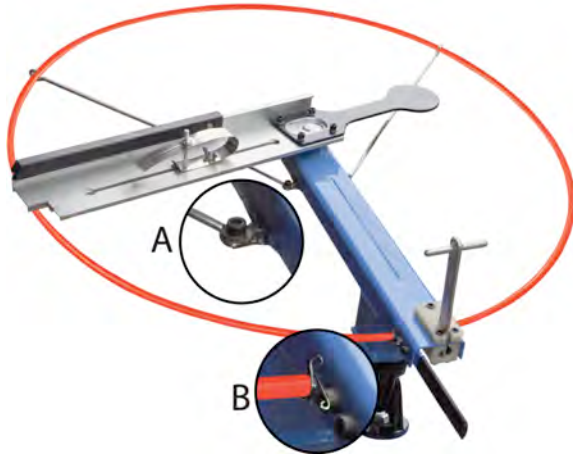


Attach handle to inside of trap head by screwing allen bolts through trap head into handle. Tighten securely.



Rotate the arm counter clockwise into the 1 o'clock position. Hook the black main spring into the silver swiveling spring hook, which is attached underneath the throwing arm/clutch pivot point.

At the narrow end of the black main spring, screw one of the provided 1/2" nuts onto the threaded 1/2" bolt about 1" deep. Pull the threaded 1/2" bolt through the hole at the back of the trap head carriage. Now screw on the other 1/2" nut with the provided wrench until the two nuts meet. **It is NOT necessary to tighten the spring all the way for optimum speed and distance.



To attach safety ring guard, attach the ring brace arms using allen screws (A).

Pinch arms of the spring holders (B) and slide them over ends of ring guard. Push ends of ring guard over posts on trap head and slide spring holder down over guard and post to secure.

Secure with brace arms so ring guard will show the path of the throwing arm.

SAFETY

Shooter should always stand to the side of the thrower, with a distance of no less than ten yards (30 feet) between the shooter and the thrower. Thrown targets can cause injuries. Be sure to first practice using thrower in an open area away from people, trees or animals (recommend at least 400 meter open field / shot fall zone).

- ❖ READ ALL INSTRUCTIONS BEFORE USING THROWER.
- ❖ ALWAYS WEAR PROPER EYE PROTECTION.
- ❖ NEVER THROW TOWARD SHOOTER OR BYSTANDER.
- ❖ NOT RECOMMENDED FOR CHILDREN UNDER 10.
- ❖ FOR USE ONLY UNDER CLOSE ADULT SUPERVISION.
- ❖ ALWAYS OBSERVE GUN RANGE SAFETY RULES.
- ❖ DO NOT ALTER THROWER.

For videos or more information, or to register your product, go to www.doalldoors.com

Eagle
IMPORTS INC.

BERSA

For target shooting or home defense, Do-All Outdoors, LLC.
Recommends Bersa Guns. Visit our friends at www.bersa.com



Firearms | Holsters | Grips | Apparel | Accessories