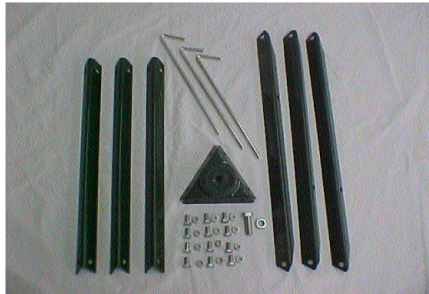
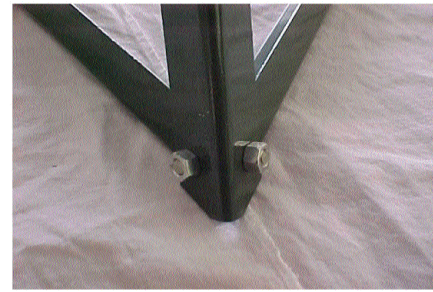
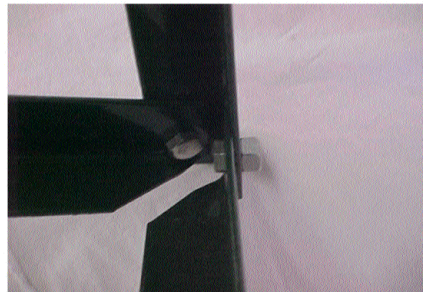


Do-All Traps Clay Hawk Base Assembly



Item	Description	Qty
1	Ground/Base Frame (with holes)	3
2	Side/Corner Upright Frame	3
3	Triangular/Top Pivot Casting	1
4	Hex Bolt 1 3/4"	1
5	Hex Nut 1/2"	1
6	Hex Bolt	12
7	Hex Nut	12
8	Ground mount spikes	3



FRAME ASSEMBLY

(DO NOT TIGHTEN HEX NUTS COMPLETELY UNTIL ALL HAVE BEEN STARTED)

The hex bolts are the same size as the holes, therefore it will be a tight fit to ensure a stable and firm base.

- 1 Take the Ground/Base Frame with holes and lay out in a triangular shape. Take one of the Side/Corner Upright Frames and overlap one corner of the Ground/Base triangle. Push the hex bolts (one of the 12 included) through the ground base and into the side corner upright from the inside out. Secure with one of the 12 provided hex nuts.



2 Once you have assembled the bottom and sides of the base assembly, cap with the Triangular/Top Pivot casting. Now that the top is in place, secure with provided hex bolts and hex nuts from the inside out. Be sure to go back and tighten down all hex nuts on frame assembly.

3 Take the 1 3/4" hex bolt and push up through the center hole of the Triangular/Top Pivot casting securing with the 1/2" hex nut. This is where you will attach the 3 Pivot Mount and your Trap Head.

**** When using your Clay Hawk in the field, make sure you anchor your frame securely by driving your Ground Mount Spikes into the earth at opposite angles.**

www.do-alltraps.com

1-866-SHOT DOC

Do-All Traps, LLC does not accept any responsibility for damages and/or injury sustained from the use or misuse of this product.