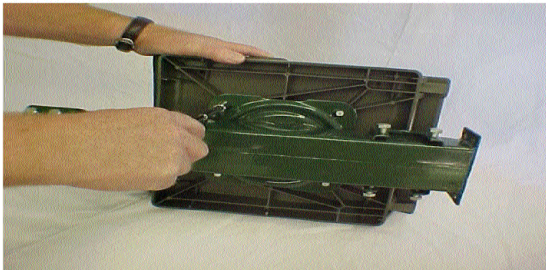
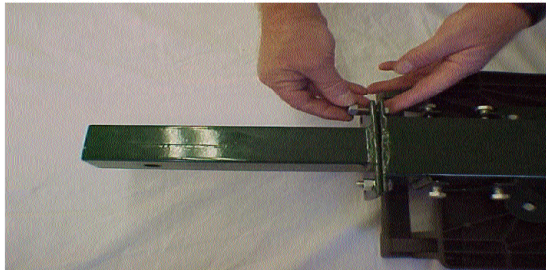


Do-All Traps DOUBLE FRAME ASSEMBLY

Item	Description	Qty
1	Tail Beam Assembly	1
2	Bolts 3/8"	18
3	Support Legs Long/Rear	2
4	Support Legs Short/Front	2
5	Seat Assembly	1
6	Sliding Beam Assembly	1
7	Self tapping screws	4
8	Plastic Seat	1
9	Nut 1/2"	2
10	Nut 3/8"	4
11	Front T Tube/Launcher Mount	1



Take plastic seat and position onto the seat plate/seat assembly making sure the seat back folds toward the flat mounting plate for the tail beam assembly. Secure the seat to the seat plate by using the 4 self tapping screws.



Take the tail beam and assemble securely to the flat mounting plate on the back of the seat assembly using four 3/8" nuts and 3/8" bolts.

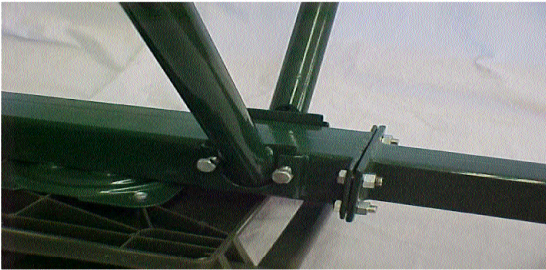
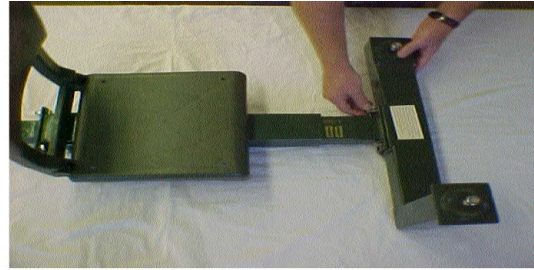


Slide the Sliding Beam Assembly into the seat assembly to desired length and then lock into position with two 3/8" bolts.

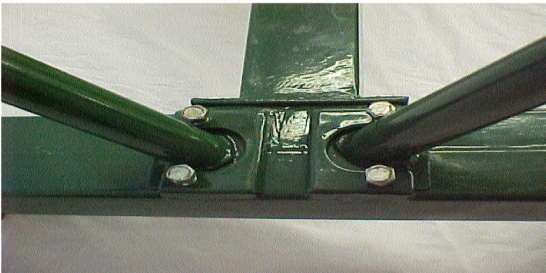
** The sliding beam assembly can be adjusted for necessary length/reach.



Place the seat assembly/sliding beam assembly upright (with plastic seat on top). Take the Front T Tube and place it against the mounting plate at the front of the sliding beam assembly. With the four holes aligned, screw in the four 3/8" Bolts into the the threaded holes on the Front T Tube.



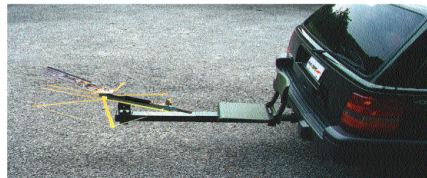
Take the two long/rear support legs and slot them into the two rear leg brackets. Note that the predrilled holes at the end of each leg are the feet not the mounting brackets. Therefore they should be the end that will be sitting on the ground. These holes are provided if you want to mount your trap frame to a solid surface or platform.



Take the two short/front support legs and slot them into the two front leg brackets under the Front T Tube. Note that the predrilled holes at the end of each leg are the feet not the mounting brackets. Therefore they should be the end that will be sitting on the ground. These holes are provided if you want to mount your trap frame to a solid surface or platform.



This is how your Double Trap Base/Frame should look complete. Now follow instructions for attaching your Trap Heads to the frame.



To mount into your 2" receiver, just slide the legs out and slide tail beam assembly into your hitch as shown above.

www.do-alltraps.com
1-866-SHOT DOC

Do-All Traps, LLC does not accept any responsibility for damages and/or injury sustained from the use or misuse of this product.