

Do-All Traps SINGLE FRAME ASSEMBLY

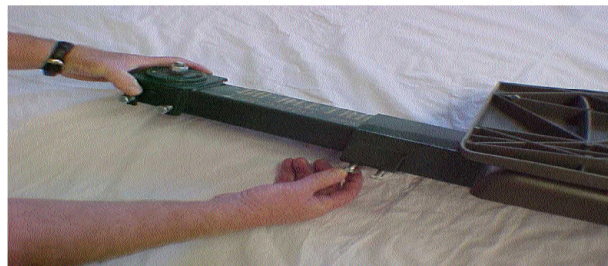
Item	Description	Qty
1	Tail Beam Assembly	1
2	Bolt 3/8"	14
3	Support legs	4
4	Seat Assembly	1
5	Sliding Beam Assembly	1
6	Self tapping screws	4
7	Nut 3/8"	4
8	Plastic seat	1
9	Nut 1/2"	1



Take plastic seat and position onto the seat plate/seat assembly making sure the seat back folds toward the flat mounting plate for the tail beam assembly. Secure the seat to the seat plate by using the 4 self tapping screws.



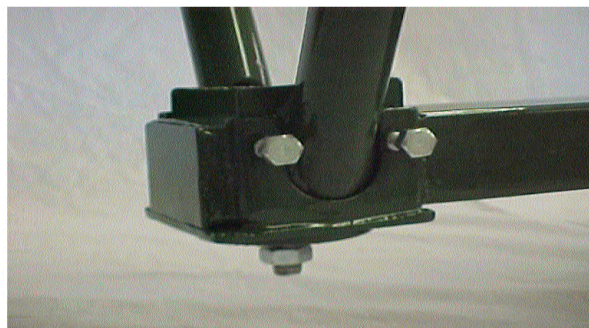
Take the tail beam and assemble securely to the flat mounting plate on the back of the seat assembly using four 3/8" nuts and 3/8" bolts.



Place the seat assembly upright (plastic seat on top) and slide the Sliding Beam Assembly into the seat assembly to desired length and then lock into position with two 3/8" bolts.

** Make sure the 1/2" bolt at the end of the sliding beam assembly is in the upright position

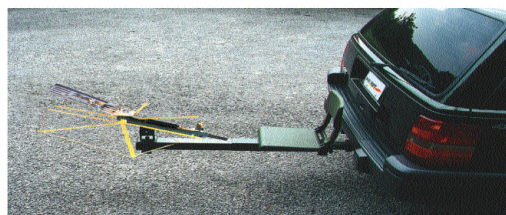
** The sliding beam assembly can be adjusted for necessary length/reach.



Take the four support legs and slot them into the four leg brackets as per pictures. Note that the predrilled holes at the end of each leg are the feet not the mounting brackets. Therefore the square plates with holes should be the end that will be sitting on the ground. These holes are provided if you want to mount your trap frame to a solid surface or platform.



This is how your Single Trap Base/Frame should look complete. Now follow instructions for attaching your Trap Head to the frame.



To mount into your 2" receiver, just slide the legs out and slide tail beam assembly into your hitch as shown above.

www.do-alltraps.com

1-866-SHOT DOC

Do-All Traps, LLC does not accept any responsibility for damages and/or injury sustained from the use or misuse of this product.