

White Pheasant Auto Trap

WARNING

SAFETY, STORAGE & USE

IF THE MAIN SPRING IS ATTACHED AND THE TRAP ARM IS IN THE 6 O'CLOCK POSITION, THE TRAP IS ARMED AND EXTREME CAUTION IS REQUIRED.

TO DISARM, TURN THE SWITCH UP TO DISARM ON THE TRAP AND DEPRESS THE FOOT PEDAL RELEASE. THIS ROTATES THE ARM CLOCKWISE UNTIL IT REACHES THE 12 O'CLOCK POSITION.

WHEN DISARMED, REMOVE THE MAIN SPRING BEFORE MAKING ANY ADJUSTMENTS IN REGARDS TO TRAP POSITION OR WHEN STORING THE TRAP AFTER USE.

WHEN STORING THE UNIT, TURN THE SWITCH TO THE OFF POSITION AND MAKE SURE THAT THE SPRING IS REMOVED.

DO-ALL TRAPS, LLC DBA DO-ALL OUTDOORS, LLC DOES NOT ACCEPT ANY RESPONSIBILITY FOR DAMAGES AND/OR INJURY SUSTAINED FROM THE USE OR MISUSE OF THIS PRODUCT.



WHITE PHEASANT AUTO TRAP

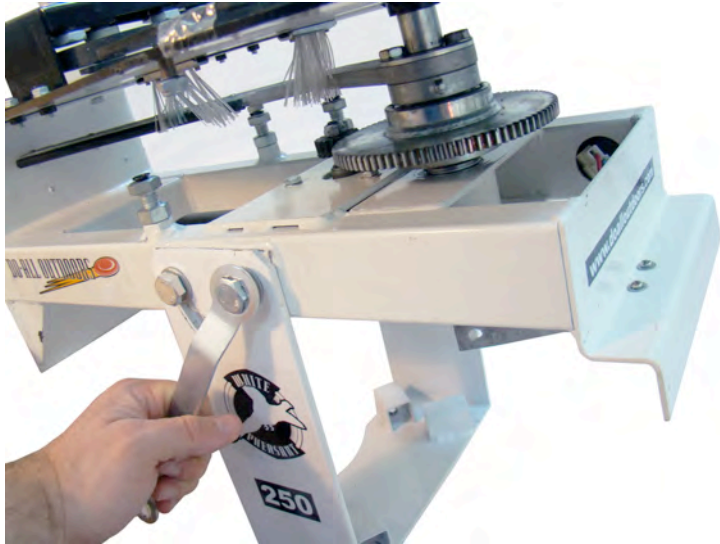
Parts Included:

- 4-Legs
- 1-Mounting Plate
- 24-Stacker Poles with Hex Screws
- 1-Upper Cover Plate
- 1-Black Main Spring
- 1-Spade Bolt with 2 M10 lock nuts
- 1-Foot Pedal
- 1-Main Unit
- 1-Safety Ring
- 1-Allen Wrench
- 1-Large Wrench
- 1-Small Wrench
- 1-Safety Pin with small chain
- 3-Supporting Rods
- 1-Long U Style with 4 M10 Bolts

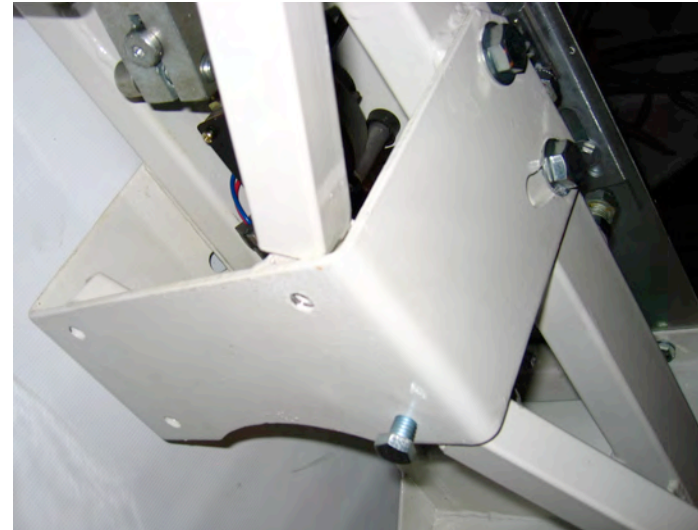


Find Instructions, Video, FAQs & Keep up with
all of our new & exciting products by visiting: www.doalloutdoors.com

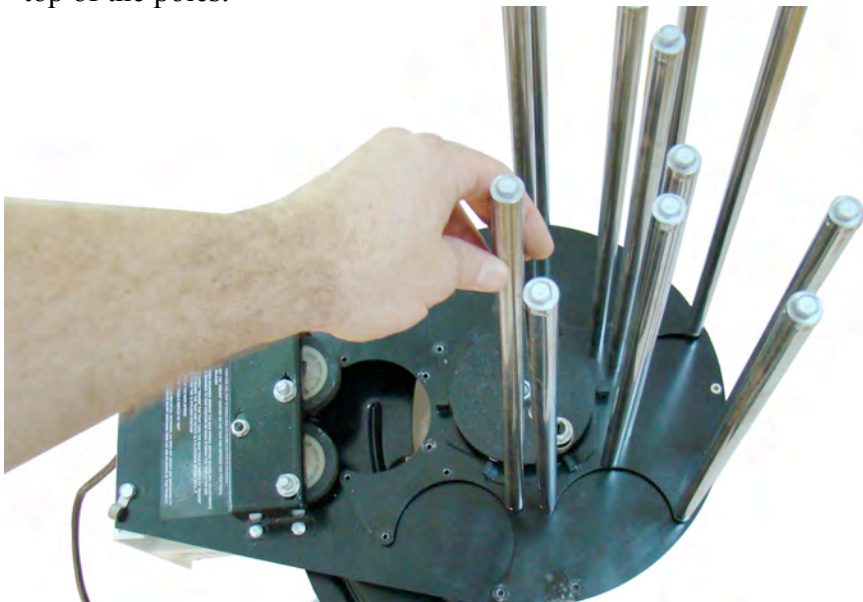
Attach leg brace with half moon opening in the back.



Insert Legs into each leg bracket and tighten with bolt.



Screw each pole into the top plate of the trap. Unscrew bolts from top of the poles and use them to secure the upper cover plate to the top of the poles.

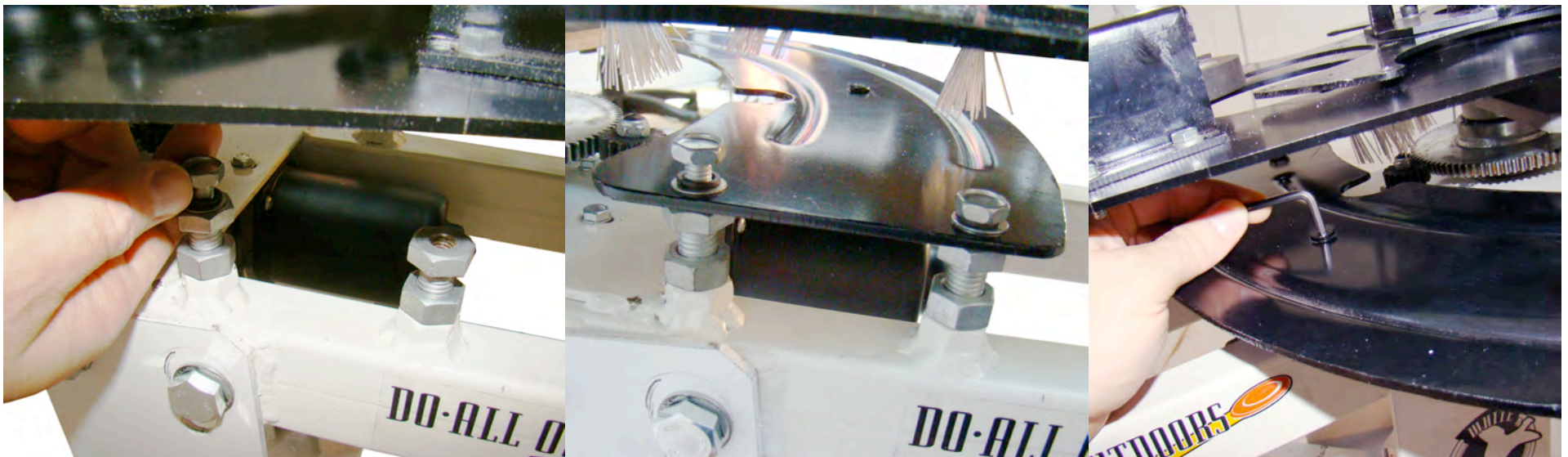


The White Pheasant Automatic Trap is outfitted with an adjustable tray. The reason for this adjustment is so that the throwing arm will strike the clay in the correct spot every throw. When you take the thrower out of the box and start assembly these tray levelers will need to be adjusted. If you look at a profile of the clay, there is a bottom thick ring that moves up the clay and then steps in giving you the Middle or Second ring. When the clay is thrown the arm needs to hit perfectly on the second ring. When thrown, the clay travels down the length of the arm coming off the tip of the arm. If there is a point where the arm either pinches on the bottom thick ring of the clay, or it raises up to the top dome of the clay it will cause it to break. The tray levelers prevent the arm from hitting on the wrong place of the clay. They enable you to level the tray to the clay so it will hit in the correct spot. During the next few steps we will walk you through the correct adjustments.

•**Before you attach the main spring**, locate the 3 bolts & nuts attached to the frame of the White Pheasant Trap. Two will have regular hex bolts, one will have a phillips head bolt. Remove the TOP bolts and set aside. Take your mounting plate and insert from the right side of the trap lining up the 3 holes. Insert the 3 bolts and hand tighten. With a few clays stacked in the tubes, take the arm on the Auto Trap and cycle it around as it would be loading itself (Counter-Clockwise cycle). If it is hitting the clay too high, adjust each tray leveler up so the tray raises to meet the clay's Second ring perfectly. If it is hitting too low, maybe One clay will fall onto the table as the arm comes around to the loaded position. Push the arm all the way up against the clay. First thing you want to look for is that the arm is hitting on this Middle or Second ring of the clay. If the arm on the bottom most ring, screw down the M12 inch bolts so the tray is lowered to meet the Second or Middle ring of the clay. Next, take the clay and slide it all the way down the length of the arm making sure it stays perfectly on that Second or Middle ring of the clay. You want to make sure it is not pinching on the bottom most ring or raising up on the dome of the clay at any point. Then push the arm forward, just as it would be throwing the clay, and slide the clay all the way down the length of the arm again making sure it is still hitting on the correct spot. Do this all the way through a full cycle and make sure the arm is hitting on the Second or Middle ring all the way out to the point where the clay comes off the tray to be thrown.

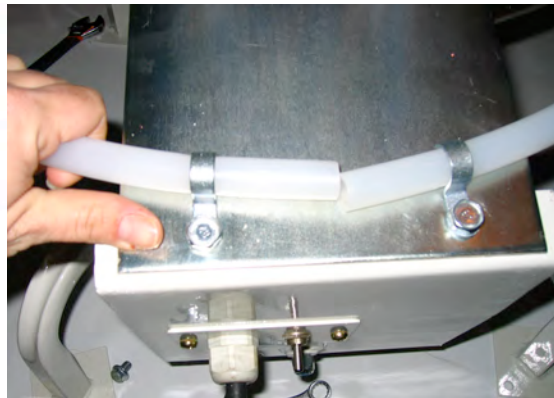
•When the tray is perfectly level all the way through the clays cycle, you will tighten each bolt and phillips head bolt making sure lower bolt does not twist out of position. Once all the nuts are tightened down to the tray you can tighten down the lower lock nuts against trap frame to make sure the bolts do not loosen up.

The White Pheasant Arm should always hit on the 2nd tier of the clay. If there is ever a problem with breakage, TAKE OFF THE MAIN SPRING and walk through the steps above. Any other questions please call 1-800-252-9247 or email: customerservice@do-alltraps.com





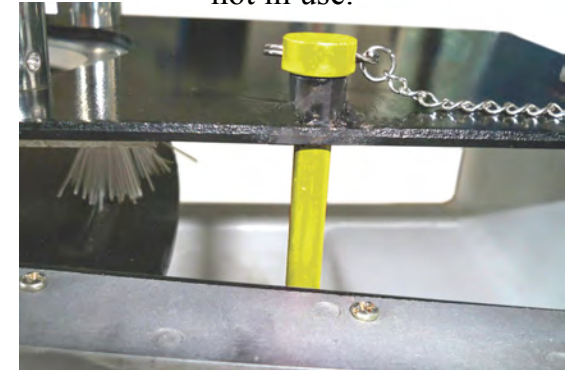
Safety Ring Guard shows the projection of the throwing arm when in use to ensure safety.



TO ASSEMBLE: ATTACH 3 HOLDING ARMS UNDERNEATH DECK OF THE TRAP USING THE 3 SCREWS ATTACHED TO THE DECK. LOOSEN CLAMP BOLTS ON REAR OF TRAP AND SLIDE EACH END OF THE PLASTIC GUARD AS SHOWN ABOVE. REMOVE ONE OF THESE BOLTS TO INSERT THE END OF SAFETY PIN CHAIN UNDER BOLT TO SECURE YOUR SAFETY PIN TO THE TRAP.

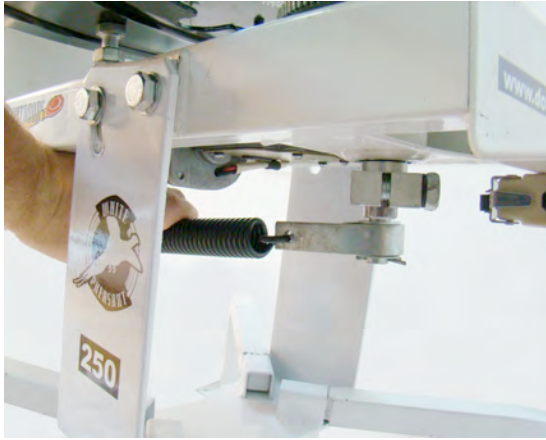
IMPORTANT:

For your safety, insert safety pin in top plate blocking throwing arm when trap is not in use.



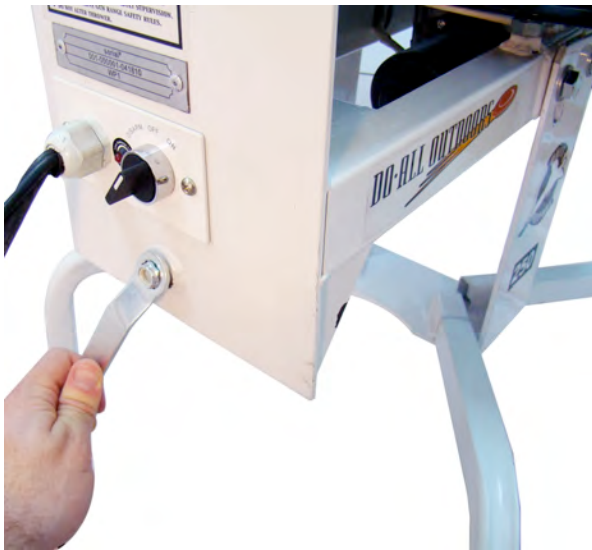
This pin is designed to catch the arm, the trap should be disarmed and the spring disconnected if transporting, working on, adjusting or storing.





Rotate arm counter clockwise to 12:00. Insert Black Main Spring into silver swiveling spring hook. Attach Spade Bolt to spring & feed thru opening at back of trap. Tighten to show 1 or 2 threads on the back side of the lock nut. Now tighten the inner lock nut closer to the frame.

***Main spring should be disconnected when not in use.**



Loosen the bolts on either side of the trap to adjust the throwing angle. Once desired angle is reached, tighten the bolts.



Low Voltage Light:

The LED Low Voltage indication light on the switch panel will light up when the battery voltage drops too low. This will indicate that your battery needs to be re-charged.

Switch Operation:

Off Position stops arm in current position/ On will cycle arm counter clockwise stopping at loaded 6 o'clock position/ Disarm will take arm clockwise all the way out to the 12 o'clock unloaded position leaving no tension on the spring. When adjusting, reloading, or transporting or storing make sure the trap is disarmed, placed in the 12 o'clock uncocked position, and the main spring removed.

SAFETY

Shooter should always stand to the side of the thrower, with a distance of no less than ten yards (30 feet) between the shooter and the thrower. Thrown targets can cause injuries. Be sure to first practice using thrower in an open area away from people, trees or animals (recommend at least 400 meter open field / shot fall zone).

- ◆ READ ALL INSTRUCTIONS BEFORE USING THROWER.
- ◆ ALWAYS WEAR PROPER EYE PROTECTION.
- ◆ NEVER THROW TOWARD SHOOTER OR BYSTANDER.
- ◆ NOT RECOMMENDED FOR CHILDREN UNDER 10.
- ◆ FOR USE ONLY UNDER CLOSE ADULT SUPERVISION.
- ◆ ALWAYS OBSERVE GUN RANGE SAFETY RULES.
- ◆ DO NOT ALTER THROWER.

Load clays, attach Foot Pedal cord to outlet & hook connectors to battery & you're ready to shoot!

*****LOADING, SERVICE, TRANSPORT & STORING*****

You must ensure that the trap is in an un-cocked position when not in use.

PLEASE DO NOT RETURN ITEM TO STORE. FOR QUESTIONS, CONCERNS OR WARRANTY INFORMATION, PLEASE CALL: 800-252-9247

PLEASE ENSURE THAT ALL PARTIES INVOLVED WITH THE OPERATION OF THE WHITE PHEASANT AUTO TRAP READ AND ADHERE TO ALL SAFETY WARNINGS.

DO-ALL TRAPS, LLC DBA DO-ALL OUTDOORS, LLC DOES NOT ACCEPT ANY RESPONSIBILITY FOR DAMAGES AND/OR INJURY SUSTAINED FROM THE USE OR MISUSE OF THIS PRODUCT.

Register your trap, find Instructions, videos, FAQs & Keep up with all of our new & exciting products by visiting: www.doalldoors.com

Eagle
IMPORTS INC.

BERSA

For target shooting or home defense, Do-All Outdoors, LLC.
Recommends Bersa Guns. Visit our friends at www.bersa.com



Firearms | Holsters | Grips | Apparel | Accessories